



2018 PARTS GUIDE

BATTERIES



ALL-MAKES HEAVY-DUTY BATTERIES

Alliance Truck Parts has over 30 product lines that serve the commercial transportation industry with reliable new and remanufactured parts and accessories for all makes and all models¹ to keep trucks and buses on the road. All Alliance Truck Parts meet or exceed OES specifications for quality, fit and finish and are backed by a nationwide warranty², which means you don't have to trade quality for price.

PARTS NUMBERING SYSTEM

The Alliance Truck Parts numbering system is set up systematically. Part numbers in this program contain the prefix of ABP. The remaining digits are based on part and design.

Example: ABP AE1131MF or ABP A31S650VL

All parts in this catalog are set up with an Alliance Truck Parts number. In the back of this catalog, you will find an extensive cross-reference list. This will help link another manufacturer's part to an Alliance ABP number.

WARRANTY

Alliance Truck Parts Group 31 batteries with ABP AE prefix are backed by an 18-month/unlimited-mile standard warranty.

All other Alliance Truck Parts batteries are backed by a 1-year/unlimited-mile standard warranty.

Illustrations and photographs used in this catalog may vary slightly from the actual product. Prototype samples are sometimes used for photography. The production parts may vary slightly.

Availability of products shown in this catalog is subject to change without notice.

¹For nearly all heavy-duty truck makes and models | ²See warranty for complete details and limitations.

1	HEAVY-DUTY BATTERIES	
	STARTING BATTERIES	5
	DUAL-PURPOSE BATTERIES	7
	AGM BATTERIES.....	9
	AGM BATTERIES WITH FAHRENHEIT TECHNOLOGY	11
2	SPECIALTY BATTERIES	
	SPECIALTY BATTERIES.....	13
3	CROSS-REFERENCE	
	BATTERIES CROSS-REFERENCE	18

1

BATTERIES

HEAVY-DUTY BATTERIES



FEATURES & BENEFITS

- Available in a wide selection of performance levels to meet the demands of any application
- Alliance Group 31 fits most makes and models of heavy-duty trucks
- Maintenance-free design reduces operational costs
- Resists vibration damage for better performance and longer life with these features:
 - Anchor-locked elements
 - Full-framed short resistant plates
 - Reinforced internal components like straps, welds and posts
 - Heavy-duty polypropylene case and cover
- Full-framed, optimized power plates deliver quick, efficient starting power
- Tough, stainless steel terminals prevent corrosion for better power transfer and performance
- Subjected to over 250 quality tests for unmatched reliability and performance

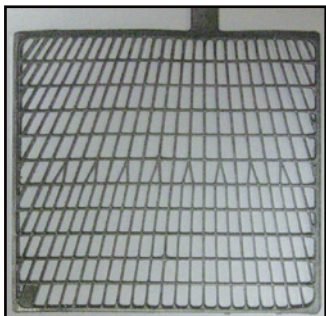
SPECIFICATIONS

ALLIANCE P/N	COLD CRANKING AMPS @ 0° F	RESERVE CAPACITY MINS @ 80° F	CRANKING AMPS @ 32° F	VOLTS	TERMINAL
ABP AE931MF	650	150	800	12	Stud
ABP AE931PMF	650	150	800	12	Post
ABP AE1031MF	760	170	935	12	Stud
ABP AE1031PMF	760	170	935	12	Post
ABP AE1131MF	950	175	1170	12	Stud
ABP AE1131PMF	950	175	1170	12	Post
ABP AE1131XMF	1000	185	1230	12	Stud
ABP AE1131XPMF	1000	185	1230	12	Post
ABP AE1231MF	1125	195	1260	12	Stud
ABP AE1231PMF	1125	195	1260	12	Post
ABP A31S650VL	650	130	800	12	Stud
ABP A31P650VL	650	130	800	12	Post
ABP A31S925VL	925	170	1110	12	Post
ABP A31P925VL	925	170	1110	12	Stud

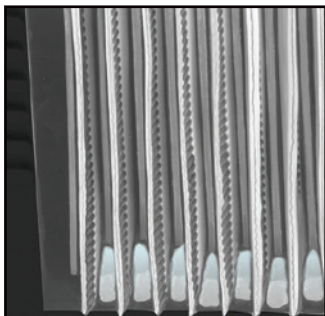
WARRANTY

Alliance Truck Parts Group 31 batteries with ABP AE prefix are backed by an 18-month/unlimited-mile standard warranty. All other Alliance Truck Parts batteries are backed by a 1-year/unlimited-mile standard warranty.

CONSTRUCTION FEATURES



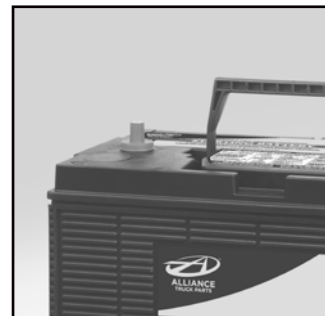
All the power is directed to the terminals using this full-frame, highly-efficient grid design.



Anchor bonding the plates to the bottom of the case extends life.



All four sides of the plate are protected in these deep-pocket envelope separators.



Non-accessible flush covers are maintenance-free, allowing easy installation, replacement and cleaning.



FEATURES & BENEFITS

- Delivers premium performance that meets most cranking, reserve capacity and accessory power needs
- Alliance Group 31 design fits most makes and models of heavy-duty trucks
- Maintenance-free design reduces operational costs
- Resists vibration damage for better performance and longer life with these features:
 - Anchor-locked elements
 - Full-framed short resistant plates
 - Reinforced internal components like straps, welds and posts
 - Heavy-duty polypropylene case and cover
 - Glass mat glued envelope separators
- Heavy-duty plates contain high-density oxide for high-cycling applications
- Tough, stainless steel terminals prevent corrosion for better power transfer and performance
- Subjected to over 250 quality tests for unmatched reliability and performance

SPECIFICATIONS

ALLIANCE P/N	COLD CRANKING AMPS @ 0° F	RESERVE CAPACITY MINS @ 80° F	CRANKING AMPS @ 32° F	VOLTS	TERMINAL
ABP AE7T31	730	190	900	12	Stud
ABP AE7T31P	730	190	900	12	Post
ABP AEDP31CS	700	185	860	12	Stud

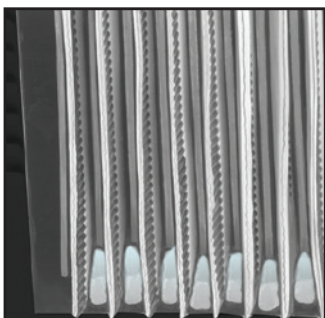
WARRANTY

Alliance Truck Parts Group 31 batteries with ABP AE prefix are backed by an 18-month/unlimited-mile standard warranty.

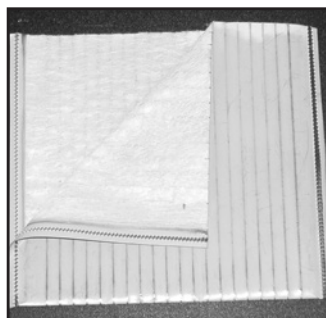
CONSTRUCTION FEATURES



Heavier plates mean longer life.



Plates are anchor bonded to the case to reduce vibration damage.



Fiberglass strands embed themselves into plate surface for reinforcement.



FEATURES & BENEFITS

- An optimal combination of starting and cycling enables more power for accessories, especially when key-off power is crucial
- Low internal resistance allows for quick starting and reduces wear on the alternator and the entire recharging system
- Resists vibration damage for better performance and longer life with these features:
 - Optimized component compression
 - Reinforced polypropylene case and cover
 - Reinforced internal components
- Positive/negative full-framed, optimized power plates deliver maximum starting power, while increasing resistance to electrical shorting and vibration
- Tough, stainless steel terminals prevent corrosion for better power transfer and performance
- Safer, spill-proof design protects your hard-used, expensive equipment

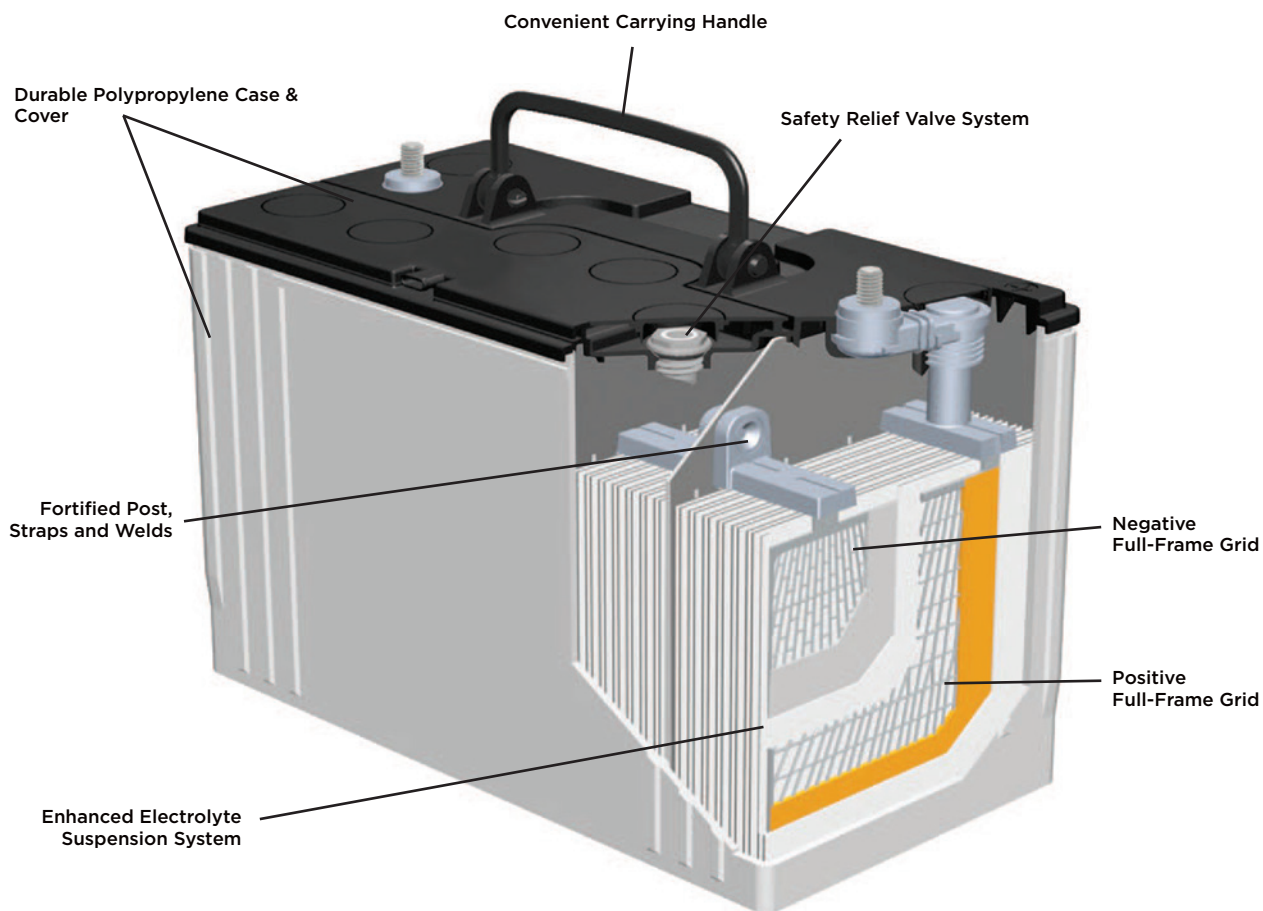
SPECIFICATIONS

ALLIANCE P/N	COLD CRANKING AMPS @ 0° F	RESERVE CAPACITY MINS @ 80° F	CRANKING AMPS @ 32° F	VOLTS	TERMINAL
ABP AE7A31	730	190	1060	12	Stud
ABP AE7A31P	730	190	1060	12	Post
ABP AE8A31	800	200	1000	12	Stud
ABP AE8A31P	800	200	1000	12	Post

WARRANTY

Alliance Truck Parts Group 31 batteries with ABP AE prefix are backed by an 18-month/unlimited-mile standard warranty.

CONSTRUCTION FEATURES





FEATURES & BENEFITS

- Special Thermal Shielding Technology® better withstand high temperature environments while providing critical cycle service power
- Cycles 50% longer than standard AGM in extreme heat tests and improves performance under normal operating temperatures
- Low internal resistance allows for quick starting and reduces wear on the alternator and entire charging system
- Resists vibration damage for better performance and longer life with these features:
 - Optimized component compression
 - Reinforced polypropylene case and cover
 - Reinforced internal components
- Full-framed, optimized power plates, stainless steel terminals and spill-proof, premium AGM design

SPECIFICATIONS

ALLIANCE P/N	COLD CRANKING AMPS @ 0° F	RESERVE CAPACITY MINS @ 80° F	CRANKING AMPS @ 32° F	VOLTS	TERMINAL
ABP AE9F31	925	190	1050	12	Stud

WARRANTY

Alliance Truck Parts batteries with ABP AE prefix are backed by an 18-month/unlimited-mile standard warranty.

2

BATTERIES

SPECIALTY BATTERIES



FEATURES & BENEFITS

- Available in a wide selection of performance levels to meet the demands of any application
- Complete line of automotive and light truck batteries
- International European Norm (EN) line consists of the most popular EN sizes designed to match cover designs, dimensional configuration, hold-down requirements and critical venting systems of original equipment
- Marine starting, deep cycle and dual-purpose batteries provide the right type of power for virtually any marine application
- Lawn and garden durable batteries fit a variety of small engine applications and last longer in demanding outdoor use
- Heavy-duty, rugged commercial power for demanding applications
- One of the broadest selections in the industry

SPECIFICATIONS

6, 8 & 12-VOLT GOLF CART					
ALLIANCE P/N	COLD CRANKING AMPS @ 0° F	RESERVE CAPACITY MINS @ 80° F	CRANKING AMPS @ 32° F	VOLTS	TERMINAL
ABP A426G*	450	55	555	12	G
ABP AGC15*	230 @ 20 HR Cap	120 Mins. @ 75A	n/a	6	U
ABP AGC25*	235 @ 20 HR Cap	132 Mins. @ 75A	n/a	6	U
ABP AGC8V*	165 @ 20 HR Cap	85 Mins. @ 75A	n/a	8	U
ABP AGC12V*	155 @ 20 HR Cap	77 Mins. @ 75A	n/a	12	N
ABP A8C6V*	165 @ 20 HR Cap	130 @ 5 HR Cap	n/a	6	U
ABP A8AGC2	680	380	n/a	6	T975 Terminal

*Golf cart batteries offer low-maintenance, low-antimony grids; however, maintenance may be required depending on duty cycle.

6-VOLT HEAVY-DUTY COMMERCIAL SERVICE					
ALLIANCE P/N	COLD CRANKING AMPS @ 0° F	RESERVE CAPACITY MINS @ 80° F	CRANKING AMPS @ 32° F	VOLTS	TERMINAL
ABP A901MF	640	130	785	6	A
ABP A904MF	975	250	1200	6	A

SPECIFICATIONS

12-VOLT HEAVY-DUTY COMMERCIAL SERVICE

ALLIANCE P/N	COLD CRANKING AMPS @ 0° F	RESERVE CAPACITY MINS @ 80° F	CRANKING AMPS @ 32° F	VOLTS	TERMINAL
ABP A708D	1100	325	1355	12	A
ABP A904D	1050	290	1290	12	A
ABP A908DFT	1425	440	1755	12	A
ABP A94DLT	850	240	1045	12	A

12-VOLT HEAVY-DUTY COMMERCIAL SERVICE - AGM

ALLIANCE P/N	COLD CRANKING AMPS @ 0° F	RESERVE CAPACITY MINS @ 80° F	CRANKING AMPS @ 32° F	VOLTS	TERMINAL
ABP A8A4D	1110	380	n/a	12	A
ABP A8A4DT975	1110	380	n/a	12	A
ABP A8A8D	1450	480	n/a	12	A
ABP A8A8DT975	1450	480	n/a	12	A
ABP A8G8D	1150	475	n/a	12	A
ABP AE8G31	450	180	n/a	12	X

12-VOLT LAWN & GARDEN - CALCIUM MAINTENANCE-FREE & AGM

ALLIANCE P/N	COLD CRANKING AMPS @ 0° F	RESERVE CAPACITY MINS @ 80° F	CRANKING AMPS @ 32° F	VOLTS	TERMINAL
ABP A10U1L	300	N/A	370	17	Z
ABP A8A22NF	350	85	420	12	G

12-VOLT MARINE & RV - DUAL-PURPOSE, DEEP-CYCLE & AGM

ALLIANCE P/N	COLD CRANKING AMPS @ 0° F	RESERVE CAPACITY MINS @ 80° F	CRANKING AMPS @ 32° F	VOLTS	TERMINAL
ABP ADP27	650	175 @ 20AH	800	12	U
ABP ADC24	500	150 @ 20AH	615	12	U
ABP ADC27	575	200 @ 20AH	705	12	U
ABP ADC31DT	650	225 @ 20AH	800	12	A
ABP A24M6	840	182	1050	12	U

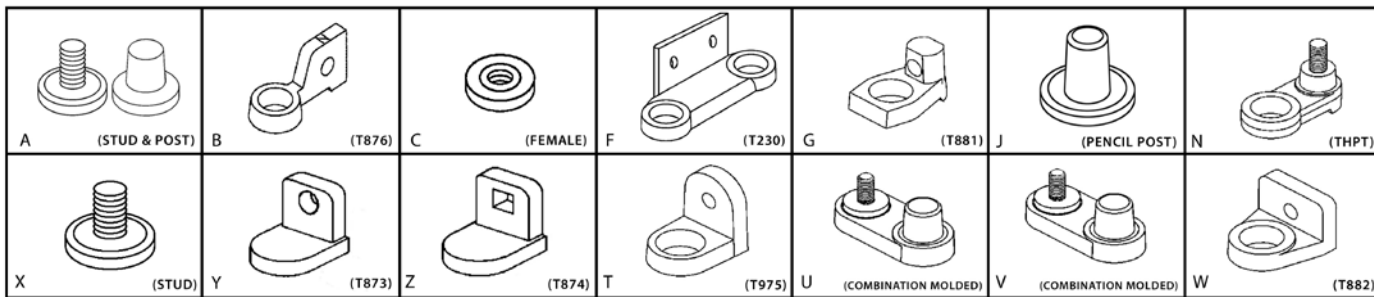
12-VOLT PASSENGER CAR / LIGHT TRUCK / VAN - AGM

ALLIANCE P/N	COLD CRANKING AMPS @ 0° F	RESERVE CAPACITY MINS @ 80° F	CRANKING AMPS @ 32° F	VOLTS	TERMINAL
ABP A9A34	775	120	890	12	A
ABP A9A65	750	150	860	12	A
ABP A9A78DT	775	120	890	12	A

SPECIFICATIONS

12-VOLT PASSENGER CAR / LIGHT TRUCK / VAN					
ALLIANCE P/N	COLD CRANKING AMPS @ 0° F	RESERVE CAPACITY MINS @ 80° F	CRANKING AMPS @ 32° F	VOLTS	TERMINAL
ABP A524MF	550	90	675	12	A
ABP A526MF	540	80	665	12	A
ABP A551MF	450	70	555	12	A
ABP A551RMF	450	70	555	12	A
ABP A565MF	675	130	830	12	A
ABP A624FMF	650	115	800	12	A
ABP A624MF	650	115	800	12	A
ABP A627FMF	710	120	870	12	A
ABP A627MF	710	120	870	12	A
ABP A634MF	690	110	850	12	A
ABP A647MF	650	100	800	12	A
ABP A648MF	680	120	835	12	A
ABP A649MF	900	185	1105	12	A
ABP A658MF	580	85	715	12	A
ABP A665MF	850	150	1045	12	A
ABP A675DT	650	90	800	12	Dual Terminal
ABP A678DT	690	110	850	12	Dual Terminal
ABP A678MF	690	110	850	12	A
ABP A694RMF	790	140	970	12	A
ABP A696RMF	600	90	740	12	A
ABP A727MF	840	140	1035	12	A
ABP A734MF	800	115	985	12	A
ABP A735MF	640	95	785	12	A
ABP A765MF	750	140	925	12	A
ABP A775MF	690	90	850	12	A
ABP A778DT	800	115	925	12	Dual Terminal
ABP A778MF	800	115	985	12	A

TERMINAL KEY



- A. Flush combination terminal w/ 5/16" stud and SAE post, hex nuts included
- B. Flag terminal w/ 3/8" diameter hole (T876)
- C. 1/4" - 20 copper insert terminal
- F. Double wide "L" terminal w/ two 3/8" holes (T230)
- G. Offset post w/ horizontal hole, stainless steel 5/16" bolt and hex nut (T881)
- J. JIS terminal "pencil post"
- N. Vertical stainless steel 5/16"-18 stud (THPT)
- T. Heavy-duty "L" terminal w/ 3/8" diameter hole (T975)
- U. Molded-in offset SAE post and vertical 5/16" NEG, 5/16" POS stainless steel studs and hex nuts

- V. Molded-in offset SAE post and vertical 5/16" NEG, 5/16" POS stainless steel studs
- W. "L" type terminal w/ 5/16" diameter hole (T882)
- X. 3/8" - 16 stainless steel stud posts
- Y. Small "L" terminal with round hole
- Z. Small "L" terminal with square hole

WARRANTY

Alliance Truck Parts batteries with ABP A prefix are backed by a 1-year/unlimited-mile standard warranty.

3

BATTERIES

CROSS- REFERENCE

CONTINENTAL BATTERY

COMPETITOR P/N	ALLIANCE P/N
HD31C	ABP AEDP31CS
XHD31C	ABP AE1131MF
HD31C	ABP AE1031MF
CAAGM31	ABP AE9F31

CROWN

COMPETITOR P/N	ALLIANCE P/N
31A-1110	ABP AE1231PMF
31A-750	ABP AE1031PMF
31A-940	ABP AE1131PMF
31A-SD1000	ABP AE1131XMF ABP AE1131XPMF
31S-1100	ABP AE1231MF
31S-750	ABP AE1031MF
31S-940	ABP AE1131MF

DELCO

COMPETITOR P/N	ALLIANCE P/N
1110	ABP AE1031MF
1111	ABP AE1031PMF
1151	ABP AEDP31CS
1200	ABP A31S650VL
1201	ABP A31P650VL
31-900CT	ABP AE1131MF
31-901CT	ABP AE1131PMF
DC-31	ABP AEDP31CS
S2000	ABP AE931MF

EXIDE

COMPETITOR P/N	ALLIANCE P/N
COM - 31D	ABP ABP31S650
COM - 31E	ABP ABP31P650
31XHCD	ABP AE7T31
31XHD	ABP AE1131MF
HP - 31E	ABP AE1131PMF
RF - 31D	ABP AE9F31
XRF - 31D	ABP AE9F31
31G660A	ABP AE931PMF

EXIDE, CONTINUED

COMPETITOR P/N	ALLIANCE P/N
31G660C	ABP AE931MF
31G700A	ABP AE7T31P
31G700C	ABP AEDP31CS
31G925A	ABP AE1131PMF
31G925C	ABP AE1131MF
Power Breed	
COMPETITOR P/N	ALLIANCE P/N
PX31650A	ABP AE931PMF
PX31650C	ABP AE931MF
PX31700XHC	ABP AE7T31P
PX31700XHA	ABP AEDP31CS
PX31750C	ABP AE1031MF
PX31925A	ABP AE1131PMF
PX31925C	ABP AE1131MF

INTERSTATE

COMPETITOR P/N	ALLIANCE P/N
31 - ECL	ABP AEDP31CS
31 - LHD	ABP AE1031MF
31 - MHD	ABP AE1131MF
31 - VHD	ABP A31S650VL
31P - ECL	ABP AE7T31P
31P - LHD	ABP AE1031PMF
31P - MHD	ABP AE1131PMF
31P - VHD	ABP A31P650VL
SRM - 29	ABP AEDC31DT

JOHNSON CONTROLS
WD Part Numbers

COMPETITOR P/N	ALLIANCE P/N
31S-650	ABP AE931PMF
31S-725	ABP AE1031MF
MF31S-950	ABP AE1131MF
MF31S-1000	ABP AE1131XMF
31-700HC	ABP AEDP31CS

Nationwide Series

COMPETITOR P/N	ALLIANCE P/N
31T-HD660	ABP AE931MF
31T-725	ABP AE1031MF
31T-900	ABP A31S925VL

SUPERIOR

COMPETITOR P/N	ALLIANCE P/N
HD23	ABP A31S650VL
HD25	ABP AE1031MF
HD29	ABP AE1131MF
HD31	ABP AE1131XMF
HDA23	ABP A31P650VL
HDA25	ABP AE1031PMF
HDA29	ABP AE1131PMF
HDA31	ABP AE1131XPMF



- FIND YOUR NEAREST DEALER AT ALLIANCETRUCKPARTS.COM -

DTNA/PSM-M-1045. Specifications are subject to change without notice. Copyright © Daimler Trucks North America LLC. All rights reserved. Alliance Truck Parts is a brand of Daimler Trucks North America LLC, a Daimler company. ¹For nearly all heavy-duty truck makes and models. ²See warranty for complete details and limitations.